

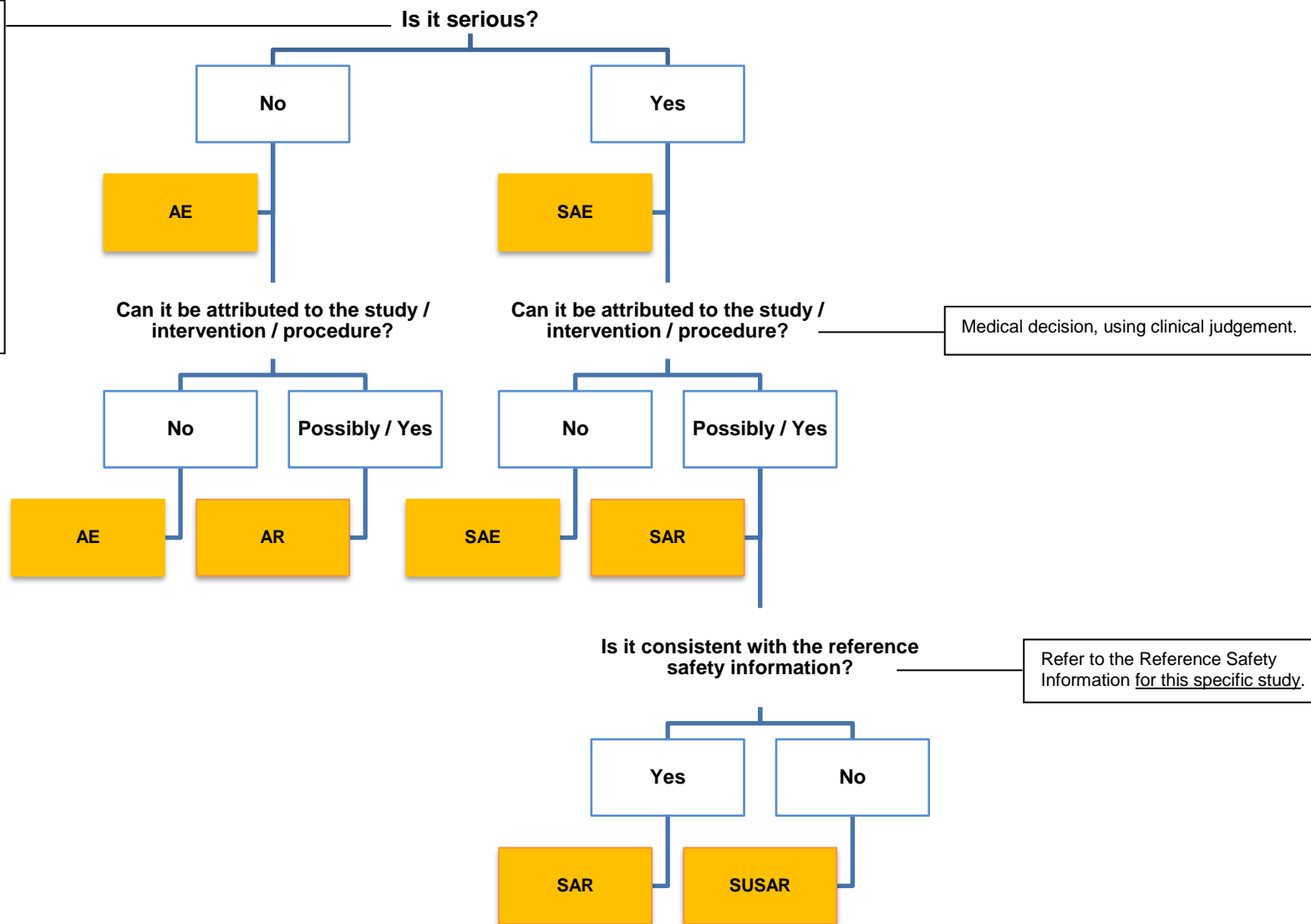
## Decision Tree for Adverse Event Reporting – CTIMPs

You have identified an Adverse Event

A **Serious** Adverse Event (SAE) is any adverse event that:

- results in death
- is a life-threatening situation
- requires hospitalisation or prolongation of hospitalisation
- results in persistent or significant disability or incapacity
- consists of a congenital abnormality or birth defect

Check the definition of **Serious** in each Protocol



### CTIMP Acronyms

AE	Adverse Event
AR	Adverse Reaction
SAE	Serious Adverse Event
SAR	Serious Adverse Reaction
SUSAR	Suspected Unexpected Serious Adverse Reaction